



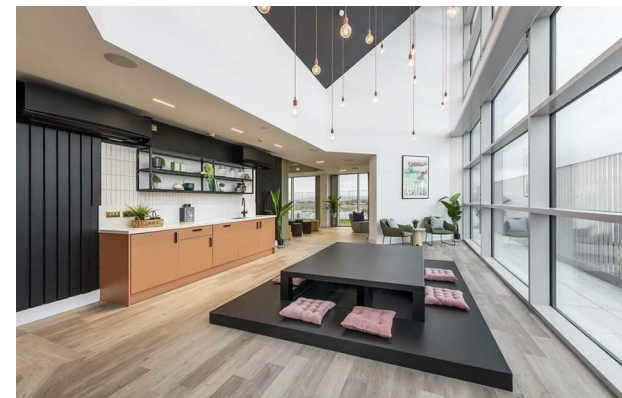
Cathedral Street | | Glasgow | G1 2BQ

£255 Per week



Cathedral Street |
 Glasgow | G1 2BQ
 £255 Per week

BRIDLE WORKS | STUDENT | SEPTEMBER |



- Karaoke Room
- Private Dining
- Cinema Room
- Communal Lounge
- Bike Storage
- Gym
- Rooftop Terrace
- Study Area
- Communal TV
- Games Area

Energy Efficiency Rating		Current	Potential
<i>Very energy efficient - lower running costs</i>			
(92 plus) A			
(81-91) B			
(69-80) C			
(55-68) D			
(39-54) E			
(21-38) F			
(1-20) G			
<i>Not energy efficient - higher running costs</i>			
Scotland		EU Directive 2002/91/EC	

Lower Ground Floor
 27 Ridley Place
 Newcastle upon Tyne
 Tyne and Wear
 NE1 8JN
 0191 6403450
 info@propertybynest.co.uk